

Sunfab SL is a series of straight double pumps with extremely low noise levels for demanding mobile hydraulics.

Sunfab SL in DIN has a range of eight different sizes, in which three models have differentiated flow. Pumps with differentiated flow increase the areas of use where they can provide three types of flow: a small, a large and a combined flow.

Max working pressure depending on model 4786-5076 psi.

Sunfab SL's slim pump housing enables direct installation on the power take off in very confined spaces. SL is also easy to install with frame mountings via an intermediate shaft.

SAE also available.

Sunfab SL is available in a version with a Savtec valve for applications where the hydraulics need to be used while the vehicle is on the move.

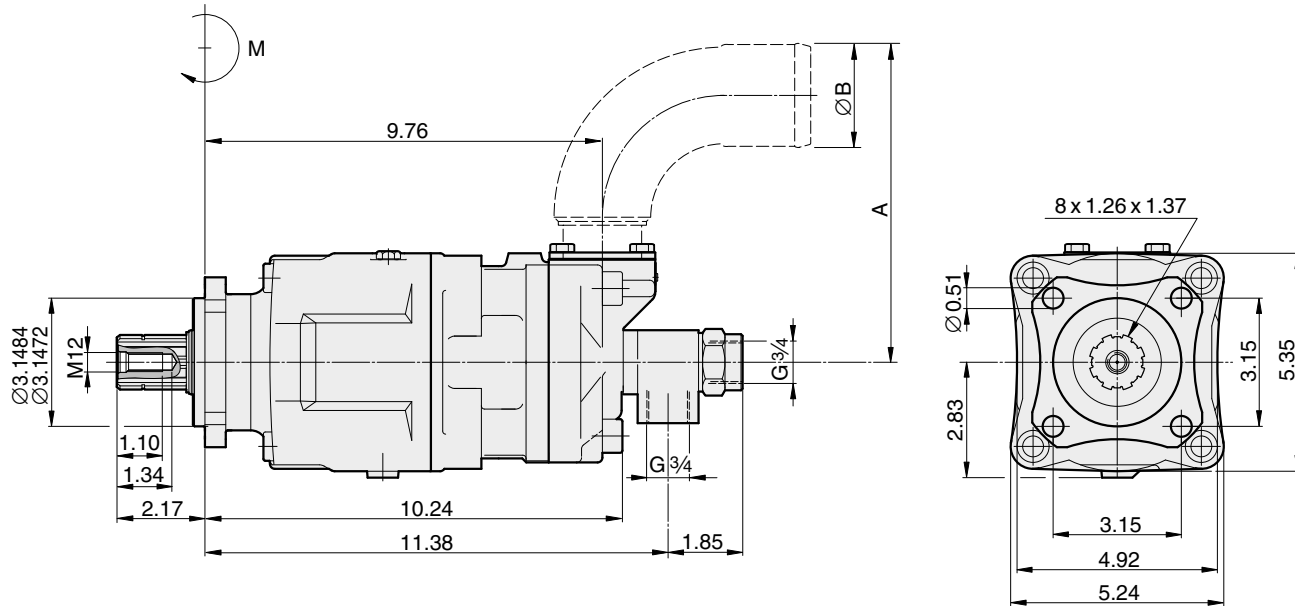
Sunfab SL's high level of reliability is based on the choice of materials, hardening methods, surface structures and the quality assured manufacturing process.

Other advantages of Sunfab SL

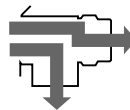
- A complete cost effective solution compared to a conventional installation with two pumps in one splitter gear box
- Large displacement allows low engine speed and low noise levels
- Smooth running over the entire speed register
- Long service life when tough demands are placed on the material choices such as bearings, seals etc.
- O-rings on all contact surfaces as well as double shaft seals eliminate oil leakage from the pump and power take off
- One year warranty
- Complete inventory and service in the USA

Type SL		20/20	28/28	40/20	35/35	56/28	46/46	53/53	64/32
Nominal oilflow at pumpspeed RPM	500	2.64+2.64	3.18+3.18	5.28+2.64	4.62+4.62	6.36+3.18	6.08+6.08	7.00+7.00	8.45+4.23
	1000	5.28+5.28	6.36+6.36	10.56+5.28	9.25+9.25	12.71+6.36	12.15+12.15	14.00+14.00	16.91+8.45
	1500	7.92+7.92	9.53+9.53	15.84+7.92	13.87+13.87	19.07+9.53	18.23+18.23	21.00+21.00	25.36+12.68
Displacement	cu in/rev.	1.24+1.24	1.68+1.68	2.48+1.24	2.07+2.07	3.35+1.68	2.80+2.80	3.21+3.21	3.85+1.93
Max. pump speed	RPM	2200	1800	2200	2200	1800	1800	1600	1600
Max. working pressure	psi	5076	5076	5076	4786	5076	4786	4786	5076
Weight	lb	48.5	48.5	48.5	48.5	48.5	48.5	48.5	48.5
Dimensions	in								
	A	5.24	5.24	5.24	5.24	6.54	6.54	6.54	6.54
	B	2	2	2	2	2 1/2	2 1/2	2 1/2	2 1/2
Tare-weight torque	lb-ft	M	19.5	19.5	19.5	19.5	19.5	19.5	19.5
Direction of rotation	Independent								

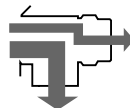
We reserve the right to make design modifications without prior notification



20/20, 28/28, 35/35, 46/46, 53/53



40/20, 56/28, 64/32



Spline shaft:
DIN 5462 / ISO 14
Mounting flange:
ISO 7653-D

Useful conversions:

1 in = 25.40 mm
1 GPM = 3.79 l/min.
1 cu in/rev. = 16.39 cm³/rev.
1 psi = 0.00689 MPa
1 psi = 0.07 bar
1 lb = 0.45 kg
1 lb-ft = 1.36 Nm